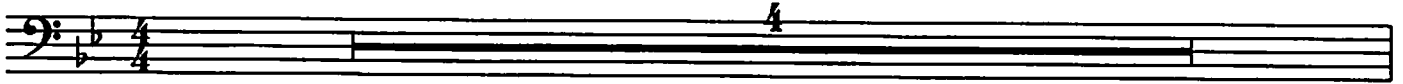


# Jumping at the woodside

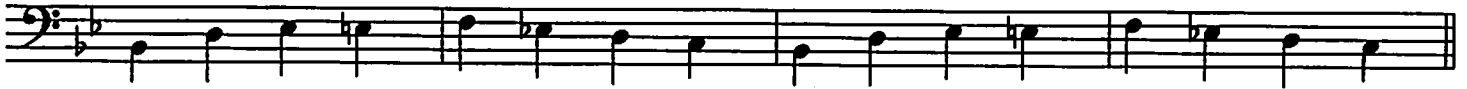
Bass

Arr. Jean-Claude et Dominique

Fast T°

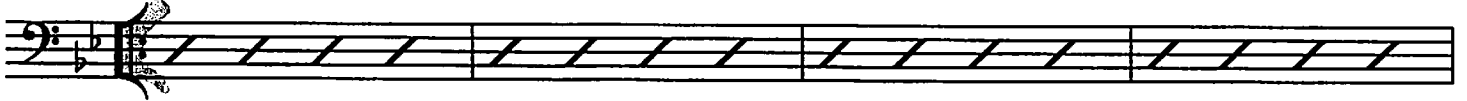


B<sub>b</sub>6



A

B<sub>b</sub>6



F7

B<sub>b</sub>6

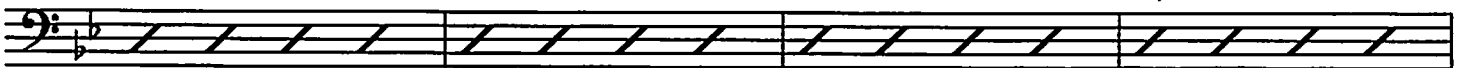


B

B<sub>b</sub>6

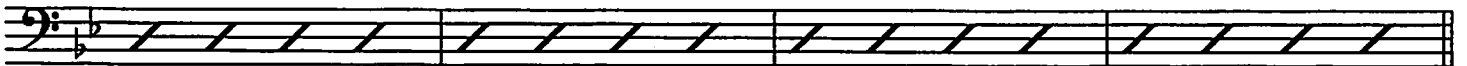
E<sub>b</sub>

G7



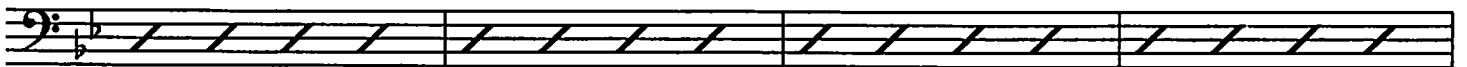
C7

F7



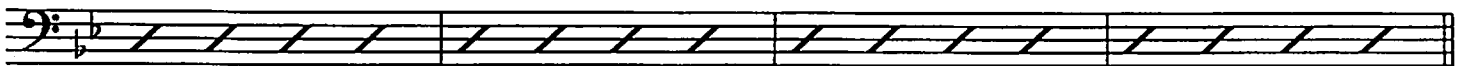
C

B<sub>b</sub>6



F7

B<sub>b</sub>6

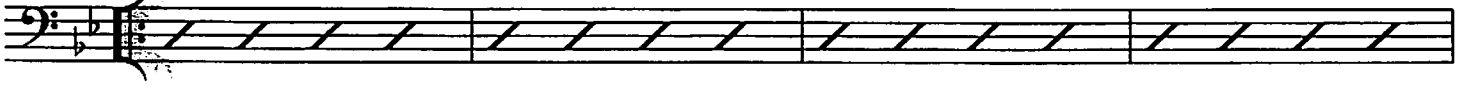


D

B<sub>b</sub>6

F7

B<sub>b</sub>6



Cm7 F7 1. B $\flat$ 6

A bass staff in C minor with Cm7, F7, and 1. B $\flat$ 6 chords. The melodic line consists of quarter notes: G $\flat$ , F, E $\flat$ , D $\flat$ , C $\flat$ , B $\flat$ , A $\flat$ , G $\flat$ .

2. B $\flat$ 6 E B $\flat$ 7

A bass staff with 2. B $\flat$ 6, E, and B $\flat$ 7 chords. The staff is hatched for the first two measures and contains a double bar line in the third measure.

E $\flat$ 7 C9

A bass staff with E $\flat$ 7 and C9 chords. The staff is hatched for the first two measures and contains a double bar line in the third measure.

F7 F B $\flat$ 9

A bass staff with F7, F, and B $\flat$ 9 chords. The melodic line consists of quarter notes: G $\flat$ , F, E $\flat$ , D $\flat$ , C $\flat$ , B $\flat$ , A $\flat$ , G $\flat$ .

Cm7 F7

A bass staff with Cm7 and F7 chords. The melodic line consists of quarter notes: G $\flat$ , F, E $\flat$ , D $\flat$ , C $\flat$ , B $\flat$ , A $\flat$ , G $\flat$ .

B $\flat$ 6 G B $\flat$ 6

A bass staff with B $\flat$ 6, G, and B $\flat$ 6 chords. The staff is hatched for the first two measures and contains a double bar line in the third measure.

Cm7 F7

A bass staff with Cm7 and F7 chords. The melodic line consists of quarter notes: G $\flat$ , F, E $\flat$ , D $\flat$ , C $\flat$ , B $\flat$ , A $\flat$ , G $\flat$ .

1. B $\flat$ 6 F7 2. B $\flat$ 6 F7

A bass staff with 1. B $\flat$ 6, F7, 2. B $\flat$ 6, and F7 chords. The melodic line consists of quarter notes: G $\flat$ , F, E $\flat$ , D $\flat$ , C $\flat$ , B $\flat$ , A $\flat$ , G $\flat$ .

H B $\flat$ 7 E $\flat$

A bass staff with H, B $\flat$ 7, and E $\flat$  chords. The staff is hatched for the first two measures and contains a double bar line in the third measure.

C7 F7

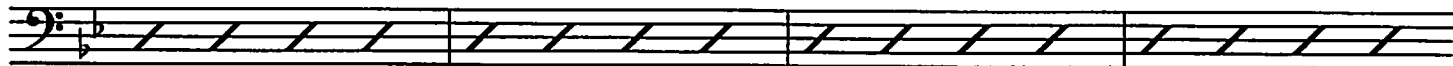
A bass staff with C7 and F7 chords. The staff is hatched for the first two measures and contains a double bar line in the third measure.

I

B $\flat$ 6

F7(b9)

B $\flat$ 6

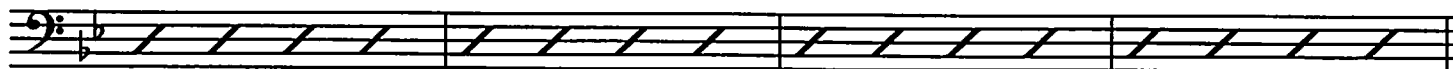


Cm7

F7

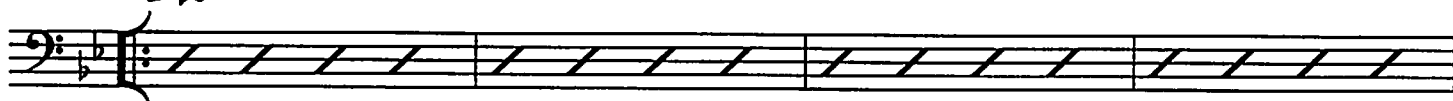
B $\flat$ 6

F9



J

B $\flat$ 6



F7

B $\flat$ 6

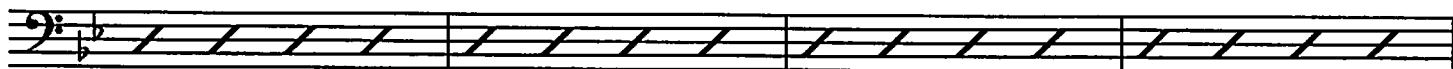
F7



K

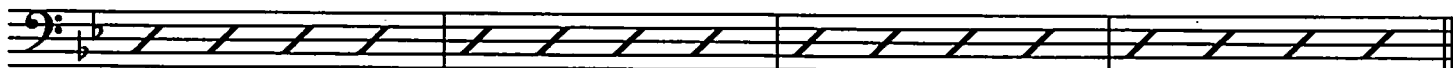
B $\flat$ 7

E $\flat$



C7

F7

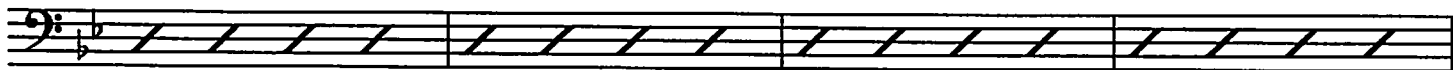


L

B $\flat$ 6

F7

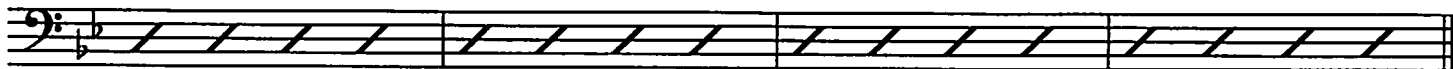
B $\flat$ 6



F7

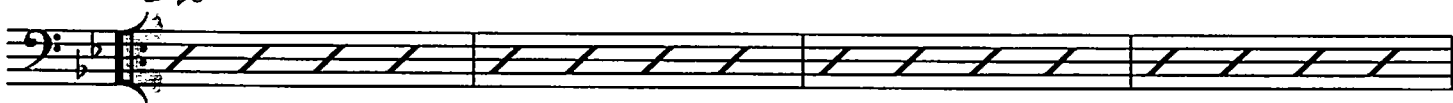
B $\flat$ 6

F7



M

B $\flat$ 6



Cm7

F7

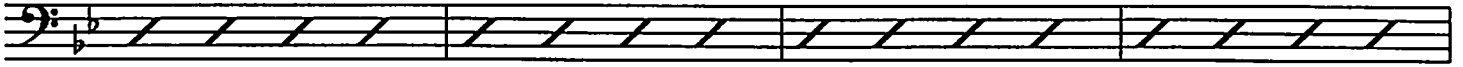
B $\flat$ 6



N

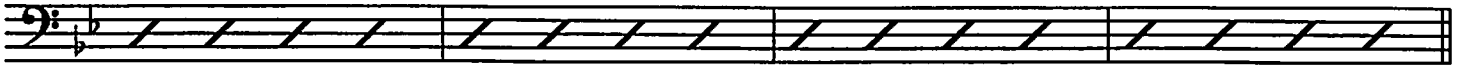
B $\flat$ 7

E $\flat$



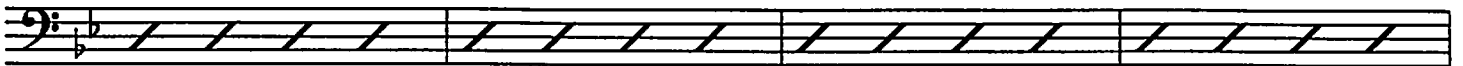
C7

F7(#5)



O

B $\flat$ 6

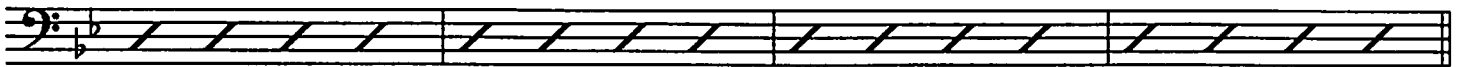


Cm7

F7

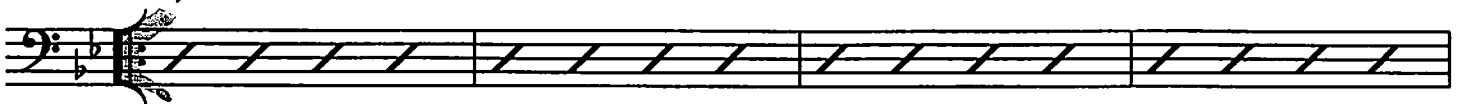
B $\flat$ 6

F7



P

B $\flat$ 6



Cm7

F7

1. B $\flat$ 6

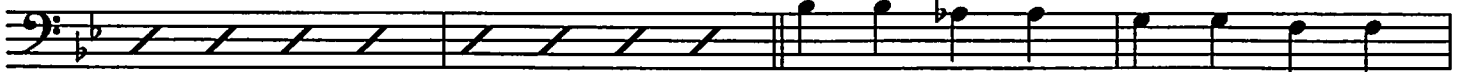
F7



2. B $\flat$ 6

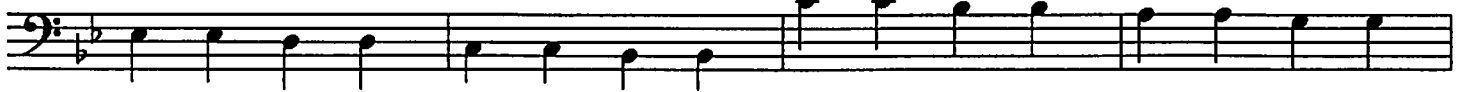
R

B $\flat$ 7



E $\flat$

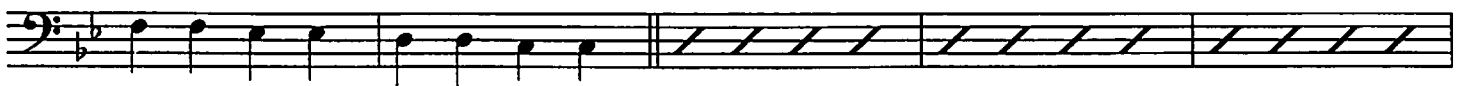
C7



F7

S

B $\flat$ 6



Cm7

F7

rit.

T $^{\circ}$  dédoublé en 4

B $\flat$ 6

B $\flat$ 9

